



organic™
color curl care control
systems

SALON MANUAL

Exclusively Offered by



1-888-213-4744 | organicsalonsystems.com



Technical Assistance: 1-888-213-4744 ext: 902 | Online Ordering: organicsalonsystems.com

Contents

Section	Page
General Information:	
The pH levels of OCS Products	4
Organic Color Systems:	
Organic Color Systems vs. other non-ammonia brands	5
Color Gel ingredients: What they are derived from and their functions	6
Activator ingredients: What they are derived from and their functions	7
The color range	8
The color wheel	9
Predominant tones	10
Application information for Organic Color Systems	11
Concentrates: What colors they can be used with and what colors they neutralize	12
Liquid Activators: A brief guide on their use and what levels of lift can be achieved with them	13
Intensifiers: What colors to use them with, how to achieve different formulations and how to achieve bright and funky colors (only available for non-EU countries)	14
Naturlite: Lightening powder without ammonia	15
Naturlite Oil	15
Cream Activators	15
Specialist treatments	16
Important notes and sensitivity skin test	17
Organic Curl Systems:	
Perming	18
Relaxing	19
Soft body perm	20
Specialist treatments	21
Organic Care Systems:	
The range: Status Quo and Aqua Boost	22
The range: Power Build and Soothe Plus	23
Summary of use	24
Directions for use	25
Specialist treatment	26
Active ingredients	27
Organic Control Systems:	
The range	28
Summary of use	29



Technical Assistance: 1-888-213-4744 ext: 902 | Online Ordering: organicsalonsystems.com

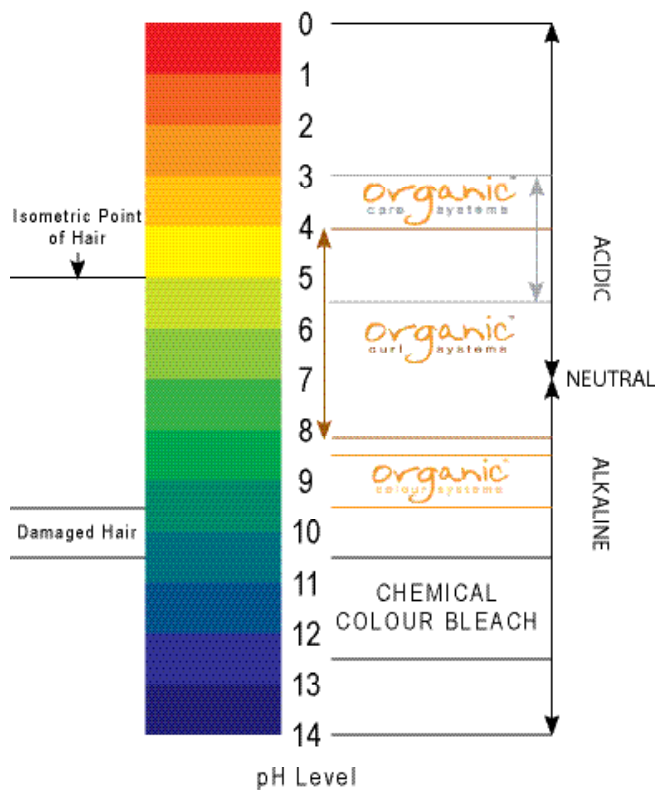
Contents cont...

Section	Page
Organic Connect:	
The range	30
Summary of use	31
Key Ingredients:	
Organic Color Systems Color Gel	32
Liquid Activator	34
Cream Activator	35
Naturlite	36
Organic Care Systems Shampoos	37
Organic Care Systems Reconstructors	40
Organic Care Systems Conditioners	42
Organic Care Systems Soothe Plus Shampoo	45
Organic Care Systems Soothe Plus Treatment	48
Organic Care Systems Conditioner	49
Organic Curl Systems Perm Lotion	53
Organic Curl Systems Perm Activator	54
Organic Curl Systems Neutralizer	55
Organic Control Systems	56
Organic Connect	57
Quick Reference Guides:	
Organic Color Systems	59
Naturlite and Naturlite Oil	60
Intensifiers	61
Step-by-Step Guides:	
Wet stretch test	62
Back wash	63
Coloring	64
Foiling	65
Eco Tips:	
Our top 10 tips to be green	66

The pH Levels of OCS Products

System	Product	pH
Organic Color Systems	Color (mixed with activator)	9.0
	Liquid and Cream Activators	3.0
	Naturlite	10.5
Organic Curl Systems	With no activator	4.0
	With 15ml activator	7.8
	With 30ml activator	8.2
Organic Care Systems	Shampoos	5.5
	Conditioners	3.0-3.5
	Reconstructors	4.0-5.0
	Revamp Treatment	4.0-5.0
	Protect Leave-In Conditioner	4.5
	Soothe Plus Shampoo	5.5
	Soothe Plus Conditioner	4.5
	Soothe Plus Treatment	3.5
Organic Connect	Silver Shampoo	6.0
	Hydrate Leave-In Conditioner	5.0

The pH Scale



better hair, better result, better you

Organic Color Systems vs. Other Non-Ammonia Brands

Until recently, Organic Color Systems was compared to hair Colors containing ammonia and the difference was obvious and easy to understand. As a result of the increasing number of non-ammonia hair Colors coming onto the market, it is important to understand the difference between Organic Color Systems and these Colors as well.

To fully understand this, it is vital to understand ammonia's role in a hair Color.

The primary function is to raise the pH of the hair sufficiently so as to open the cuticle and allow the Color to enter the cortex of the hair. Depending on the percentage of ammonia in each Color this can vary as to how high the pH of the hair is taken. The more ammonia there is in the product, the higher the pH of the hair. This is a tried and tested, but outdated method (as proven by the number of companies now launching Color ranges without ammonia), as the cuticle is generally expanded to such an extent as to allow the Color to easily enter the cortex. The secondary function is that when mixed with peroxide, ammonia neutralizes the existing Color pigments to a greater degree.

This is a tried and tested (but outdated method, as proven by the number of companies now launching Color ranges without ammonia), as the cuticle is generally expanded to such an extent as to allow the Color to easily enter the cortex. Unfortunately there are three main side effects:

1. At the same time that the Color is swelling the cuticle to easily enter the cortex, there is significant protein and moisture loss. This is how the hair is damaged during Coloring when using an ammonia Color.
2. The pH of the hair is raised to such an extent by the ammonia that it is physically impossible to return it to its ideal pH after Coloring. This means that the cuticle remains open, the hair continues to lose protein and moisture and there is also an increased risk of Color fade.
3. As a result of the cuticle remaining open, the percentage of pigment in the Color needs to be as high as possible. This is necessary as a relatively high percentage of the Color will be lost when rinsing off at the backwash. Plus, due to the greater neutralisation of the pigment by the ammonia-peroxide mix, a higher pigment percentage is required.

More and more companies are now removing ammonia from their hair Colors. This is commendable, as ammonia is an extremely harsh chemical and does not need to be in hair Color.

Unfortunately the vast majority of these Colors have merely removed ammonia from the Color and replaced it with an ingredient called ethanolamine, but the same three side effects mentioned above still apply. The rule that the more ammonia there is in the Color, the higher the pH applies to ethanolamine as well. All they have achieved is to remove ammonia from their Colors; they haven't managed to decrease the pH that these Colors take the hair to.

The key difference with Organic Color Systems is that the base of the Color (the main ingredient) is not only alkaline, so it raises the pH of the hair, but it is also a conditioning agent, so it softens the cuticle at the same time. This softening process means that Organic Color Systems is able to work at a far lower pH and is a far gentler way to Color the hair. As a result, the three side effects mentioned above don't apply to Organic Color Systems.

Organic Color Systems does contain ethanolamine. It is used because the base isn't sufficiently alkaline to open the cuticle enough for the Color to enter the cortex. Ethanolamine is therefore used to increase the pH enough so that this can occur. Organic Color Systems uses oleic acid in the formulation specifically to neutralize any residual ethanolamine.



Ingredients - Organic Color Systems Color Gel

Ingredient	Source	Function
PEG-2 Soyamine	Naturally-derived from soya bean	Alkaline moisturising gel base
Aqua	Pure water (filtered and deionised)	Solvent
Cocamide DEA	Naturally-derived from coconut	Lathering agent & thickener
Alcohol Denatured	Naturally-derived from corn	Viscosity adjuster
Oleic Acid	Naturally-derived from olive oil	Moisturiser and neutralizer
Propylene Glycol	Synthetic	Conditioner, humectant and solvent
Ethanolamine	Naturally-derived from coconut	pH adjuster
** Hydrolyzed Wheat Protein	Organic wheat	Conditioner and protein-provider
Parfum	Natural and synthetic blend	Fragrance
PEG-7 Glyceryl Cocoate	Naturally-derived from coconut	Anti-irritant
* Aloe Barbadosensis	Organic aloe vera leaf	Soothing
* Symphytum Officinale	Organic comfrey root	Scalp soother and healing agent
* Citrus Dulcis	Organic orange peel	Anti-oxidant
* Citrus Grandis	Organic grapefruit seed	Anti-oxidant
Ascorbic Acid	Natural vitamin C	Anti-oxidant
Tocopherol	Naturally-derived vitamin E	Anti-oxidant
Sodium Sulphite	Synthetic	Stabiliser
Sodium Hydrosulfite	Synthetic	Stabiliser
Tetrasodium EDTA	Synthetic	Stabiliser
p-Phenylenediamine	Synthetic	Color pigment
4-Chlororesorcinol	Synthetic	Color pigment
2-Amino-4-Hydroxyethylaminoanisole Sulphate	Synthetic	Color pigment
N-Phenyl-p-Phenylenediamine Sulphate	Synthetic	Color pigment
4-Amino-2-Hydroxytoluene	Synthetic	Color pigment
M-Aminophenol	Synthetic	Color pigment
2-Methylresorcinol	Synthetic	Color pigment
p-Aminophenol	Synthetic	Color pigment
2-Amino-3-Hydroxypyridine	Synthetic	Color pigment
HC Yellow 2	Synthetic	Color pigment

Ingredients Explanation:

4-Chlororesorcinol

Color pigment – different compound from Resorcinol; not toxic.

2-Methylresorcinol

Color pigment – different compound from Resorcinol; not toxic.

Ethanolamine

A coconut-derived material used as a pH adjuster. Far less corrosive than ammonium hydroxide used in most ammonia hair Colors.

* Soil Association Organic Standard

** ECOCERT

Ingredients - Organic Color Systems Activator

Ingredient	Source	Function
Aqua	Pure water (filtered and deionised)	Solvent
Hydrogen Peroxide (Pharmaceutical Grade)	Synthetic	Oxidant
* Anthemis Noblis	Organic chamomile flower	Soothing agent
* Phenoxyethanol, Benzyl Alcohol, Potassium Sorbate, Tocopherol	Synthetic	Preservative system
Etidronic Acid	Synthetic	Chelating agent
Polyquaternium-10	Naturally-derived from plant cellulose	Conditioner and film former

* Soil Association Organic Standard

** ECOCERT



The Color Range

Colors 1-10

Blue/Violet Base

This range will cover grey hair. Colors 1-8 will give 100% grey coverage. Colors 9-10 are for grey blending.

NNs 4-8

This range is designed for greater softening of the cuticle and is for coverage of resistant, grey hair.

Ash 4AH-10AH

This range has a varying base depending on depth.

4AH - 5AH are blue/green

6AH - 7AH are blue/violet

8AH - 10AH are violet

Silver Ash 8S-10S

These Colors are mixed tones designed to give soft violet ash (see shade chart for formulae).

Gold 4GD-10GD

Yellow Base.

This range is designed to give natural golden tones.

Copper Gold 6CG-8CG

Orange/Yellow Base.

These Colors are mixed tones to give natural copper gold (see shade chart for formulae).

Copper 4CR-8CR

Orange Base.

This range is designed to give natural copper tones.

Bright Copper 6BC-8BC

Concentrated Orange/Yellow Base.

This range is designed to give rich fashion copper tones.

Bright Red Copper 5RC-7RC

Concentrated Red/Orange Base.

This range is designed to give rich fashion red/copper tones.

Full Spectrum Colors

4MO 6TO 8CA

These Colors are designed to give mocha, toffee and caramel tones. The Colors are a combination of different Color ways, therefore they are not found on the Color wheel. Colors used to achieve these tones are blue, gold, copper, grey and violet.

Red 4FR-8FR

Red Base.

This range is designed to give natural red tones.

Mahogany 4MH-7MH

Red/Blue Base.

This range is designed to give natural mahogany tones.

Note: 6MH is a mixed tone.

Hi-Lift 11 Series

11HN Blue/Violet Base.

11HA Blue/Green Base.

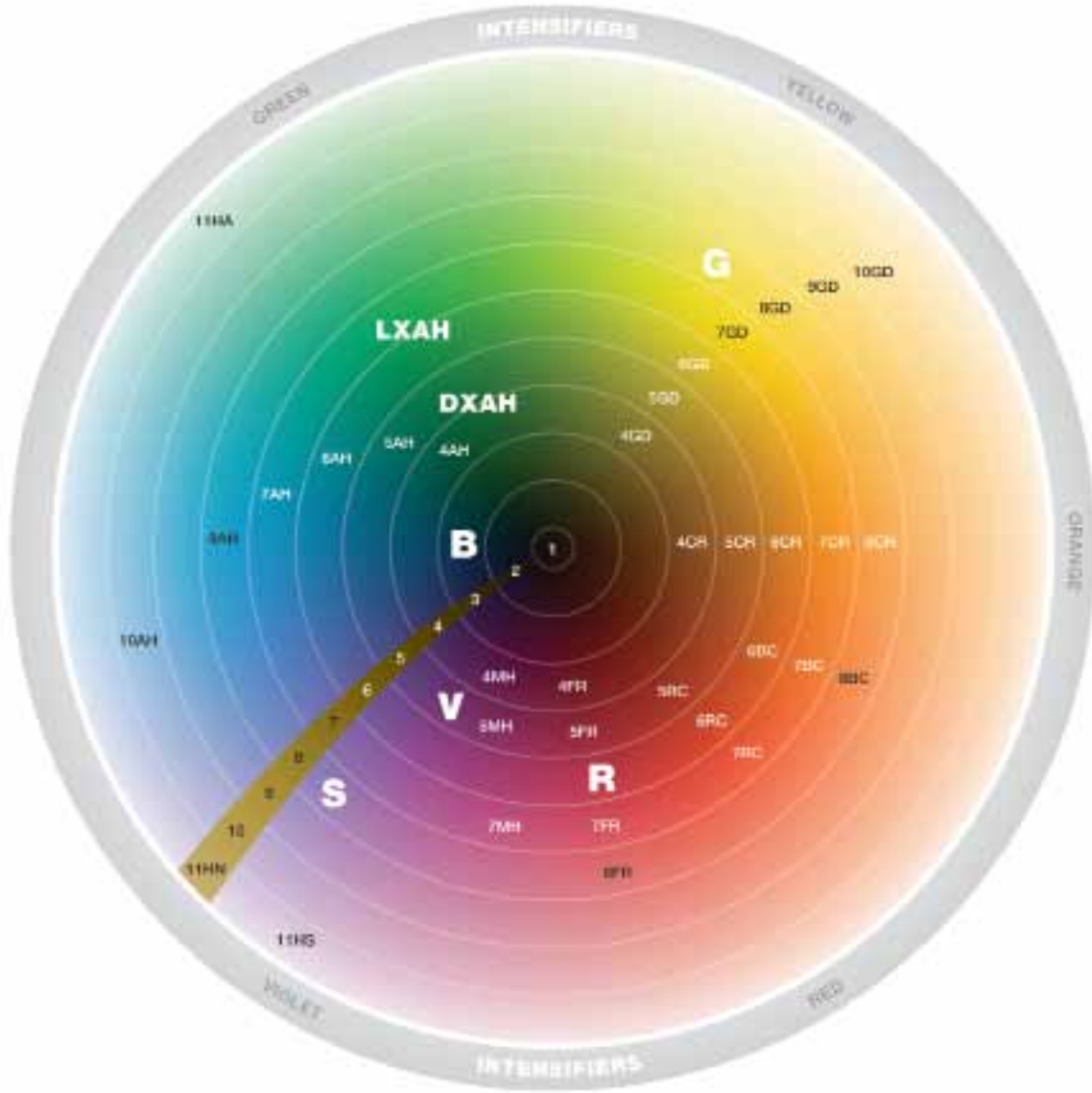
11HS Violet Base.

Note: These Colors work from a natural base 6 and lighter. Results will be natural, golden blonde.

Useful Tip: To achieve natural or platinum blondes add 1 scoop of Naturlite powder to the Hi-lift Color.



The Color Wheel



Grey Concentrate sits outside the Color wheel. 4MO, 6TO and 8CA are multi-tonal Colors that have no major tones and so cannot sit on the Color wheel, but they can be mixed freely with any other tone.

Concentrates

Gold = **G**
 Red = **R**
 Blue = **B**
 Violet = **V**
 Silver = **S**

Colors

Dark Extra Ash = **DXAH**
 Light Extra Ash = **LXAH**

better hair, better result, better you

Predominant Tones

Base	Predominant Tone / Pigment
1	Blue
2	Blue-violet
3	Violet
4	Violet-red
5	Red
6	Red-orange
7	Orange
8	Orange-yellow
9	Yellow
10	Yellow-blue



Application Information



Regrowth Application

Mix the required amount of Color, apply a generous amount to the root area and develop as described on page 13 under a heat source. After 10 to 15 minutes remove from heat and allow to rest for 15 to 20 minutes.

Color matching ends to roots

When using a base Color on the root area follow the above instructions, but after a 10 minute rest period mix up fresh Color and apply to the ends. Develop until Colors match i.e. roots and ends look the same.

Note: 1. When using Ash-AH shades choose one shade lighter. Develop until Colors match, i.e. roots and ends look the same.

Note: 2. Only use Activator 3% 10 vol or Activator 6% 20 vol. This system will not work if you use a high volume or percentage level.

Virgin Head

For the same depth or darker apply Color from the roots to ends in one application and develop as normal.



Demi-Permanent

Pre-shampoo the hair with Organic Care Systems Shampoo and towel dry. Apply Color to the whole head (any application

method may be used). Place a plastic cap over the Color and develop under a heat source for 10 minutes. Remove from heat, place a towel over the cap and develop for a further 20 minutes. Remove as recommended.

Using Colors as toners

Toners for pre-lightened hair. Colors from a base 8 and lighter can be used to add tone to pre-lightened hair. Colors must be mixed with diluted Activator 3% 10 vol - Activator 3% 10 vol should be mixed with Activator 0% 0 vol in equal parts to create this diluted mixture. See section on liquid activators.

Recommended Colors

8-9-10 from the natural range.

8AH-9AH-10AH from the ash range.

8S-9S-10S from the silver ash range.

The above Colors work on a pre-lightened base of very pale yellow.

8CR from the copper range.

8BC from the bright copper range.

8FR from the fiery red range.

The above Colors work on a pre-lightened base of orange-yellow.

11HN-11HA-11HS may also be used to give very soft tones to pre-lightened hair.

The above Colors work on a pre-lightened base of very pale yellow.

Increasing the lift of the Hi-Lift Colors

Choose any of the Hi-Lift range (11HN-11HA-11HS), mix 20ml of Color gel to 40ml of Cream Activator 12% 40 vol, then add 1 scoop of Naturlite non-ammonia lightener. Do not use bleach.



Concentrates

Concentrate Colors are an important addition, giving you the ability to customise Colors.

For best results follow the information below.

Blue (Base 2/3) is designed to add blue tones to darker shades. Also in quantities of 3ml-5ml it can be an extremely effective anti-red/orange or can be used to kill warmth.

Red (Base 6) increases red tones to the FR/MH/CR/BC/RC Colors. When added to the natural Colors 2-6 it will add subtle red tones.

Grey (Base 6-7) is used as an anti-red in the AH and natural Colors. Results will be a flatter Color when used in AH and flat brown when used in the natural Colors.

Violet (Base 5) increases violet tones in the MH and FR Colors, and when added to the natural Colors 2-7 will add subtle violet tones.

Gold (Base 7) increases gold tones in the GD/CR/BC/RC/CG Colors, and when added to the natural Colors 4-10 will add subtle gold tones.

Silver (Base 8) anti-yellow increases silver tones in the 8S-10S and 8AH-10AH Colors, and when added to the natural Colors 6-10 it will add soft silver ash tones.

Mixed Tone Concentrates

These Colors will give greater scope when customising Colors.

Deep Silver Concentrate. Follow information for Violet & Silver Concentrate.

Note: When following information for Silver the tones will be more vibrant (see shade chart for formula).

Red/Orange increases red copper tones. Follow information for Red Concentrate (see shade chart for formula).

Extra Ash LXAH (Base 6–10) and DXAH (Base 1–5)

These Colors are designed to be added to any other Color when you wish to achieve a flatter Color.

Orange increases copper tones. Follow information for Red & Gold Concentrate. Do not use with the MH Colors (see shade chart for formula).

Concentrates used for Color correction

Blue neutralizes red/orange tones.

Red neutralizes green tones.

Violet neutralizes yellow/orange tones.

Gold neutralizes violet tones.

Silver neutralizes yellow tones.

Note: When using to correct Color, mix the concentrate with a Color from the natural Color range. Make sure the natural Color is the correct depth for your target shade, e.g. to correct base 7 Color, use 7 from the natural Colors plus your concentrate. Concentrates must always be mixed with another color and cannot be used alone.

Mixing Concentrates

50ml Color plus 10ml of the concentrate.

The concentrate can be increased up to 50% of the mix depending on how intense you want the tone.

Note: Always mix an equal amount of activator to the total Color mix (e.g. Color + concentrate = 60ml, add 60ml activator).



Liquid Activators

Organic Color Systems Activators are designed to give choice and versatility. Due to our colours being gel based, the liquid activators create the perfect consistency for most color application techniques.

Activator 0% (0 volume)

This activator contains no peroxide and is used as a diluter to any activator. Mixing 1 part 12% 40 vol and 1 part 0% 0 vol will give you 6% 20 vol. Mixing 1 part 3% 10 vol with 1 part 0% 0 vol will give you a toner or Color wash.

Activator 3% (10 volume)

This activator is used to create a demi-permanent Color result. This is ideal for the first time Color client and for minor Color correction.

Activator 6% (20 volume)

This activator is used for coverage of grey hair and for Color on the same base or darker.

Activator 9% (30 volume)

This activator is used for lifting 1-2 shades, some coverage on grey hair and brighter results using the fashion Colors.

Activator 12% (40 volume)

This activator is designed to be used with the 11 Series (Hi-Lift) Colors and will achieve up to 4 shades of lift. Mixed with all other Colors it will achieve up to 3 shades of lift.

Mixing Instructions

Hi-Lift shades 30ml Color + 60ml activator 12% 40 vol. For all other Colors, mix equal amounts of Color and activator, e.g. 40ml Color + 40ml activator. For coverage on grey hair use NNS. Always make sure you measure correctly.

Development Times

Hi-Lift Colors 11 Series: 45 minutes.

All other Colors: 30 minutes.

Above are minimum times. All Colors can be left on longer if required.

Because of the gentle action of Organic Color Systems, it is necessary to place a plastic cap over the Color and place under a heat source. This will allow the cuticle to open and start the Color development. This is only for the first 10 to 15 minutes. Remove from the heat source and leave for the remaining development time. Maximum temperature should not exceed 104°F(40°C). All external heat sources except steamers can be used. **Note:** When using Naturlite in foils, no heat source is required.

Rinsing Process

Once development is complete, take the client to the backwash. Add a small amount of warm water to the Color and work to a lather and continue to massage gently for 3 to 5 minutes. This gives greater Color penetration, especially on grey hair. Rinse Color from the hair until the water runs clear. Using Organic Care Systems Shampoo, shampoo twice and rinse. Thoroughly towel dry, apply Organic Care Systems Conditioner and leave on for 5 minutes. This will ensure the hair will return to the correct pH. The hair is now ready.



Intensifiers

Organic Color Systems Intensifiers are designed to give deeper, brighter, more intense Colors.

Red: Add into all natural Colors 4 to 10, all CR, BC, RC, FR and MH Colors. Increases red tones and gives a brighter, more vibrant, funky result.

Yellow: Add into all natural Colors 4 to 10, all GD, CR and BC Colors. Increases yellow tones, giving a brighter, more vibrant, funky result.

Orange: Add into all natural Colors 4 to 10, all CR, BC and RC Colors. Increases orange tones and gives a brighter, more vibrant funky result.

Violet: Add into all natural Colors 4 to 10, all MH and FR Colors. Increases violet tones, giving a brighter, more vibrant, funky result.

Green: Add into 1 to 10, all AH Colors. Increases green tones, giving a flat ash tone. Ideal as an anti-red.

Mixing

30ml to 50ml Color gel.

30ml to 50ml activator.

Mix thoroughly.

Add from 5ml of intensifier and thoroughly blend into the Color mix.

Note: The more intensifier you add, the brighter the result.

Removal

As for Organic Color Systems (see page 59).

Important: Do not use intensifiers alongside highlights or any blonde application, as there is a possibility that the intensifiers will bleed into the blonde when being rinsed off at the backwash.

Organic Color Systems Intensifiers on pre-lightened hair

Intensifiers can be used on their own when applied to pre-lightened hair as a semi-permanent Color. They can also be added to conditioners and treatments as a temporary Color on hair that has not been pre-lightened. The lighter you lift the hair, the brighter the result and the funkier the Color.



Naturlite: Non-Ammonia Lightener & Naturlite Oil & Cream Activators



- Ammonia-free
- Contains active wheat proteins
- Dust-free
- Gentle to hair, leaving it smooth
- Easy to mix
- Does not dry; retains moisture
- Includes a violet pigment for an anti-yellow effect
- pH is kept at an optimum level, leading to intense bleaching action

Naturlite will lift hair up to 7 levels whilst maintaining the hair's condition.

Mixing Instructions for Off-the-Scalp Applications

Using the scoop provided, measure one scoop of Naturlite, then mix in 2 scoops of the Naturlite Cream Activator and blend to a smooth paste.

Cream Activators

- Naturlite Cream Activator 3%: designed to give 1 shade of lift.
- Naturlite Cream Activator 6%: designed to give 2 shades of lift.
- Naturlite Cream Activator 9%: designed to give 2 to 3 shades of lift.
- Naturlite Cream Activator 12%: designed to give 3 to 4 shades of lift.

Cream Activators contain a conditioning agent and are designed to be used with Naturlite, which works at a higher pH. Cream Activators also work better with resistant grey hair.

Mixing Instructions for On-the-Scalp Applications

Measure 2 scoops of Naturlite with 2 scoops of Naturlite Cream Activator 9% or 12%. Blend to a smooth paste, add 1 scoop of Naturlite Oil and mix thoroughly.

Activators

- Naturlite Cream Activator 9%: designed to give 2 to 3 shades of lift.
- Naturlite Cream Activator 12%: designed to give 3 to 4 shades of lift.

Removal for Both Applications

Add water and gently massage. Rinse thoroughly until the water runs clear. Apply Organic Care Systems Shampoo, lather and rinse, towel blot and spray Organic Care Systems Soothe Plus Treatment onto the scalp. Then apply Organic Care Systems Conditioner, ensuring that you leave on for 5 minutes. This will close the cuticle and return the hair to pH5.



Organic Color Systems - Specialist Treatments

Treatment for chemically degraded, severely damaged and over-processed hair (like wet cotton wool)

Mix 50ml of Revamp Treatment with 1tsp of Citric Acid.

Using Power Build Shampoo, shampoo twice, leaving second lather on for 5 minutes rinse and towel blot (do not rub the hair or comb through). Apply the mixture and leave on for 15 minutes and rinse off. At this stage the hair must feel hard. If not, repeat the treatment without the shampoo stage. Finally rinse off. Then apply Power Build Reconstructor and leave on for 10 minutes under heat, then rinse and apply Power Build Conditioner. Comb through gently and leave on for 10 minutes. Rinse and towel dry gently.

Hair that is degrading with either bleach or chemical Color

Revamp Treatment may be used with these products still on the hair. If the hair is breaking down with these chemicals, do not rinse them off. Spray or pour Revamp Treatment directly over them, wait until the hair starts to feel hard, then you can rinse off. Shampoo with Power Build Shampoo twice. This process must be followed by Power Build Reconstructor left on for 15 minutes under heat followed by Power Build Conditioner left on for 10 minutes.

Bleach in foil or mesh

With this application some of the hair will develop while you are still working. Instead of using water to remove the bleach, which will soften the hair and cause it to become weak, simply apply Revamp Treatment to the hair. Using cotton wool or a towel, wipe off the bleach and apply a little more Revamp Treatment. This will stop the bleach from working and fill the hair with protein, ensuring the bleached hair is strong and minimising the damage caused by conventional bleach.

To remove the build-up from two-in-one shampoos and henna

Shampoo the hair twice using a cleansing shampoo. Using a sponge work vodka through the hair and leave on for 15 minutes, rinse and shampoo with Aqua Boost Shampoo twice, leaving second lather on for 5 minutes. Rinse and apply Power Build Reconstructor, leave on for 15 minutes, rinse and apply Aqua Boost Conditioner for 5 minutes. Rinse off. If you are following this treatment with a chemical service, do not use the conditioner.

Color fade

Spray Revamp Treatment directly onto the faded areas only. When this is completed, apply Color to the hair and develop in the normal way.



Important Notes and Skin Sensitivity Test

Warnings

Hair Colorants can cause severe allergic reaction. Read and follow instructions. Please carry out a skin sensitivity test 48 hours before use. This product is not intended for use on persons under the age of 16. Temporary “black henna” tattoos may increase your risk of allergy. Do not Color your hair if:

- you have a rash on your face or sensitive, irritated and damaged scalp,
- you have ever experienced any reaction after Coloring your hair,
- you have experienced a reaction to a temporary “black henna” tattoo in the past.

Contains phenylenediamines (toluenediamines). Do not use to dye eyelashes or eyebrows. Wear suitable gloves. Rinse hair well after use. Avoid contact with the eyes. Rinse eyes immediately if product comes into contact with them. If irritation occurs or persists, seek medical advice immediately. Keep out of reach of children. For external use only. Strictly for professional use only.

For accuracy, always use measure or scales.

Always carry out a skin sensitivity test using the Organic Color Systems Sensitivity Kit.

Sensitivity Test Instructions

1. Wash a small area of skin on the inside of the elbow or between the shoulder blades.
2. Dry gently and then apply a small amount of the Color to the skin. Allow to dry. The Color may be covered with a plaster or left uncovered.
3. Leave on the skin for at least 48 hours before rinsing. If your client experiences any redness, soreness, itching or irritation, rinse the Color off the skin immediately and do not apply the Color to the hair. If irritation persists, your client should seek medical advice.

Note: If you know which shade(s) you will be using to Color your client’s hair, you should use this to carry out the sensitivity test. If you do not know the shade(s) you will be using, choose a dark shade between 1 and 3 to use in the sensitivity test. Please note, that if you will be using the Blue Concentrate on your client, you must test this on your client, as it contains a different pigment to the other Colors. It is not necessary to mix the Color with Activator. Use neat Color for the sensitivity test.

On-the-Scalp Lightening with Naturlite

You should also carry out a skin sensitivity test before on-the-scalp lightening. Wash and dry a small patch of skin on the inside of the elbow or between the shoulder blades. Mix Naturlite with the Cream Activator and mix to a smooth paste. Add a small amount of Naturlite Oil and mix thoroughly. Apply the mixed product to the cleansed area with a cotton wool bud. Leave for 48 hours. If during this time any irritation occurs, wash off immediately with cool water and do not use the product.



Organic Curl Systems: Perming, Straightening & Relaxing System

Ammonia and Thioglycolate-free.
For all hair types.

Precautions

1. Inspect the client's hair and scalp prior to perming or relaxing. Do not proceed if the client has experienced allergies or if the scalp is sore or damaged.
2. Always use protective gloves when using this product and ensure the client's clothing is well protected, replacing towels and cotton wool once they become saturated.
3. Should lotion come into contact with skin or eyes, wash immediately with cool water. If the irritation persists, seek medical advice.

Warnings

Always store in a cool, dry place away from heat sources and direct sunlight. Keep out of reach of children. Always use protective gloves when using this product. For external use only.

Instructions for Perming

Preparation

1. Prior to application, check the hair using the wet stretch test to decide the condition of the hair. Shampoo the hair using the correct shampoo according to the wet stretch test.
2. If necessary, carry out a pre-perm treatment of the correct type. A guide is listed below.
 - a. **Tinted or highlighted hair:** use Power Build Reconstructor.
 - b. **Damaged / bleached hair:** use Revamp.
 - c. **Hard, coarse, naturally hard or curly hair:** use Aqua Boost Reconstructor.



Winding

1. Section hair and wind with water. It is very important to keep the hair wet at all times.
 - a. **Normal to resistant hair:** measure 30ml of Organic Curl Systems Activator and add to the perm lotion. Replace the nozzle and mix thoroughly. Always use the lotion immediately once mixed.

b. **For tinted, lightly highlighted or fine, weak hair:** use 15ml–20ml of Organic Curl Systems activator with the perm lotion.

c. **For chemically damaged, bleached or heavily highlighted hair:** use perm lotion on its own. No activator.

Note: It may be necessary with extremely long hair to pre-dampen the hair to ensure better penetration of the perming lotion, using no activator at this point.

2. Pack damp cotton wool around the hairline in order to absorb excess lotion. Before applying perm lotion spray the rods with water to keep hair wet. Apply perming lotion using protective gloves to each rod, ensuring the hair is completely saturated. Replace damp cotton wool around the hairline.

Note: Should any lotion accidentally spill onto the skin, remove immediately with cotton wool dampened with water.

Processing

Cover wound head with a processing cap and seat client under a pre-heated dryer, set on medium heat.

a. **For normal hair:**

process 10 minutes with heat and 10 minutes without heat, taking a test curl every 5 minutes after the first 15 minutes.

b. **For tinted hair:** process 10 minutes with heat and 5 to 15 minutes without heat, taking a test curl every 5 minutes after the first 10 minutes.

c. **For lightly highlighted or fine, weak hair:**

process 5 minutes with heat and take a test curl every 5 minutes thereafter to establish the time without heat.

Note: The maximum time should not exceed 20 minutes.

d. **For bleached and damaged hair:** do not use heat. Process for 5-30 minutes, taking a test curl every 5 minutes after the first 5 minutes.

Note: Due to the exceptionally gentle nature of Organic Curl Systems, it will take 20%-30% more processing time than a conventional perm without activator.



Organic Curl Systems: Perming, Straightening & Relaxing System

Neutralising

After processing is complete, remove cap and cotton wool and rinse hair thoroughly with water as hot as possible for 10-15 minutes. Thoroughly blot each rod with cotton wool to remove any surplus water. Apply dry cotton wool around the hairline. Before applying the neutralizer gently tip the bottle to mix the contents. Apply three-quarters of the neutralizer using the bottle and applicator provided, ensuring that each rod is saturated. Leave for 5 minutes. Gently remove the rods and apply the remaining neutralizer to the hair, massaging gently. Then leave for a further 3 minutes to ensure complete penetration into the ends of the hair. Rinse thoroughly with warm water and carefully towel dry. Apply Soothe Plus Treatment to the scalp. Leave for 5 minutes and rinse off. Apply Power Build Conditioner, leave for 5 minutes and then rinse thoroughly.

Note: When styling hair that has been freshly permed, avoid pulling the hair strenuously when brushing.



For hair which stretches, but doesn't fully return:
70ml lotion
15ml activator

For a thicker, gel-based product, please use the following mixes:

For hair with normal stretch and return:
70ml lotion
30ml activator
50ml Naturlite Oil

For hair which stretches, but doesn't fully return:
70ml lotion
15ml activator
20ml Naturlite Oil

Note: Mix the Naturlite Oil and activator first and blend into a gel. Add the lotion and blend into the gel, mixing until you get a soft gel mix.

Instructions for Relaxing Hair

See precautions and warnings on page 17.

This method is only recommended for hair which is in good condition. It is not recommended for double processed hair, hair that has been bleached or has had Hi-Lift Colors applied.

Preparation

1. Carry out a wet stretch test to determine the condition of the hair.
2. Use the correct shampoo and treatment, according to the wet stretch test. Rinse and towel dry, leaving the hair damp.



Mixing

For hair with normal stretch and return:
70ml lotion
30ml activator



Application

Starting at the nape, apply the mixture using the brush to the entire hair, section by section. Using a narrow tooth comb or tail comb, gently comb the mixture through the section and continue working up the head using this method, until the whole hair has been covered by the mixture.

Again starting at the nape, continue to comb the hair straight. Keep working towards the front, then return to the nape and repeat this until the curl has relaxed. Remember to keep applying the mixture at each stage. **If any of the mixture comes in contact with the scalp, remove with wet cotton wool immediately.**

To test the hair, use the tail end of a tail comb and lift a small section of hair. Wipe the mixture from the strand. This will show the amount of curl left. If there is still too much curl, re-apply the mixture and comb as above. Leave on for a further 5-15 minutes and test again. Once you are happy with the result, you can then neutralize.

Organic Curl Systems: Perming, Straightening & Relaxing System



Neutralising
Rinse the mixture from the hair, making sure that all the lotion has been removed. If you used Naturlite Oil in the mix, then shampoo the hair with the relevant

shampoo twice (do not massage and ensure that the shampoo is worked down the hair to ensure that it remains straight) and towel dry. If you did not mix the oil into the lotion, then do not use shampoo; simply rinse the hair thoroughly.

Apply the neutralizer and comb through once. Leave for 5-10 minutes, rinse thoroughly, towel dry and apply Soothe Plus Treatment to the scalp. Leave for 5 minutes and rinse off. Apply Hydrate Leave-In Conditioner. Style the hair as desired.

Instructions for a Soft Body Perm

See precautions and warnings on page 17.

Preparation

1. Prior to application, check the hair using the wet stretch test to decide the condition of the hair. Shampoo the hair using the correct shampoo according to the wet stretch test.
2. If necessary, carry out a pre-perm treatment of the correct type. A guide is listed below.
 - a. **Tinted or highlighted hair:** use Power Build Reconstructor.
 - b. **Damaged / bleached hair:** use Revamp.
 - c. **Hard, coarse, naturally hard or curly hair:** use Aqua Boost Reconstructor.

For mixing information please look under the instructions for perming.

Winding for a Soft Body Perm

The best system is to do a brick wind. This will give the most natural effect. Starting at the front using the brick system, put the rods in the way you want the curls to fall. Firm, even tension on each rod will ensure an even result. When winding is complete, develop for 15 minutes and then test as for a normal perm. If you are happy with the result, then neutralize.

Otherwise, leave for a further 5-15 minutes and test again.

After processing is complete, remove cap and cotton wool and rinse hair thoroughly with

water as hot as possible for 10-15 minutes.

Thoroughly blot each rod with cotton wool to remove any surplus water. Apply dry cotton wool around the hairline. Before applying the neutralizer, gently tip the bottle to mix the contents. Apply three-quarters of the neutralizer using the bottle and applicator provided, ensuring that each rod is saturated. Leave for 5 minutes. Carefully remove rods and apply the remaining neutralizer to the hair, massaging gently. Then leave for a further 3 minutes to ensure complete penetration into the ends of the hair. Gently massage into a lather to ensure complete penetration into the ends of the hair and leave for a further 5 minutes.

Rinse thoroughly with warm water and then cool water and carefully towel dry. Apply Soothe Plus Treatment to the scalp. Leave for 5 minutes and rinse off. Apply Power Build Conditioner, leave for 5 minutes and then rinse thoroughly.

Note: When styling hair that has been freshly permed, avoid pulling the hair strenuously when brushing.



Organic Curl Systems - Specialist Treatments

Premature relaxation of permanent waves

Mix 50ml of Revamp Treatment and 2.5 grammes of Epsom salts.

Shampoo the hair twice with Power Build Shampoo, leaving the second lather on for 5 minutes. Towel dry, apply mixture and leave on for 5 minutes. Rinse, towel dry gently and then apply Power Build Conditioner. Leave on for 5 minutes, rinse and towel dry.

Pre-wraps

Spray Revamp Treatment on to the hair and wind as normal.

Hair that is degrading with perm lotion

Revamp Treatment may be used with this product still on the hair. If the hair is breaking down with this product, do not rinse it off. Spray or pour Revamp Treatment directly over it, wait until the hair starts to feel hard, then you can rinse off. Shampoo with Power Build Shampoo twice. With a perm you must neutralize as normal. This process must be followed by Power Build Reconstructor left on for 15 minutes under heat followed by Power Build Conditioner left on for 10 minutes.

Winding

This perm will give true to rod size curl, providing that you have 2 to 3 turns around the rod. Wind with tension to achieve this. Section the hair and wind with water or a pre-wrap, keeping the hair wet at all times. When you have completed the whole head, re-dampen every section.



Organic Care Systems - The Range

Following our belief that the hair's delicate inner structure should be protected and maintained, this range of effective care products has not only been designed to repair, soften and maintain hair, but also to work as the perfect partner to Organic Curl Systems and Organic Color Systems. The products are formulated with natural sunflower extract and many certified organic extracts and oils, to maintain the hair's natural strength, while protecting Colored hair from UV damage. It is essential to choose the correct products for your clients' hair - see the wet stretch test step-by-step on page 62.

Status Quo Range

The products are formulated from certified organic extracts and organic oils to maintain the natural balance and condition of the hair, whilst protecting it from UV damage. They are gentle enough for everyday use.

Status Quo Shampoo is formulated with the latest natural ingredients for a mild, gentle wash. It is suitable for daily use. **Status Quo Conditioner** helps to maintain the hair's natural protein and moisture balance and provides protection against UV damage. **Protect Leave-In Conditioner** is a protein and moisture-based spray-on, leave-in conditioner, which has been designed to protect the hair from the damaging effects of the environment, sun, sea, chlorine and hairdryers. It is ideal for areas of high humidity and built-up areas with high pollution levels.



Aqua Boost Range

This range is designed to soften hair. It works by softening the hair's inner protein, allowing it to have the natural stretch we need. This in turn will release the cuticle, allowing it to open more easily. It is ideal for hair that is low in moisture.



Aqua Boost Shampoo is rich in natural moisturisers and conditioners, to care for dry hair. **Aqua Boost Reconstructor** is an intense moisturising treatment formulated from a range of organic ingredients, aloe vera extract, wheat protein, vitamin B5 and natural sunflower seed extract to nourish your hair, leaving it soft and smooth. It will release very hard hair and can be used before Coloring or perming. **It is very beneficial to use it before Coloring grey hair, as it allows the cuticle to open more quickly, ensuring better penetration of the Color pigments.** **Aqua Boost Conditioner** is a highly effective conditioner designed for dry hair, leaving it nourished, smooth and protected from UV damage.



Organic Care Systems - The Range

Power Build Range

This range is designed to reconstruct hair by adding proteins and moisturisers to the inner structure of the hair. It is ideal for hair that is low in protein or protein and moisture. It is formulated from certified organic extracts, natural sunflower oil, wheat protein and vitamin B5 to add strength and volume to the hair. The hair is left smooth, strengthened and naturally protected from UV damage.

Power Build Shampoo is designed for fine, weak or limp hair and adds body and strength to hair. **Power Build Conditioner** is a superb conditioner. It leaves hair strengthened, full of volume, smooth and protected from UV damage. **Power Build Reconstructor** is an intense volumising treatment to lift fine, limp, Colored or bleached hair. **Revamp Treatment** is a highly concentrated treatment for chemically damaged or weak, fine, limp hair. It has been formulated to strengthen hair and reduce breakage.



Soothe Plus Range

This range calms, cleanses and rebalances irritated and sensitive scalps naturally. The products have been designed specifically for people with highly sensitive or irritated scalps. They are packed full of botanical and certified organic ingredients to provide a calming and soothing effect. The extremely mild shampoo is also fantastic for use as a body wash.

Soothe Plus Shampoo is formulated from botanical extracts and certified organic ingredients to cleanse highly sensitive, irritated scalps and hair. Ideal as a body wash, it may also reduce soreness and tenderness of the skin. It is pH balanced and perfume-free. **Soothe Plus Treatment** has been designed to reduce irritation and inflammation of the scalp and skin. This spray-on treatment provides a cooling and soothing effect. It is naturally preserved and perfume-free. **Soothe Plus Conditioner** is formulated from botanical extracts and certified organic ingredients to leave highly sensitive scalps and hair with the correct pH balance and in superb condition. It is perfume-free.



Organic Care Systems - Summary

	Status Quo Shampoo	Status Quo Conditioner	Aqua Boost Shampoo	Aqua Boost Conditioner	Power Build Shampoo	Power Build Conditioner	Aqua Boost Reconstructor	Power Build Reconstructor	Revamp	Soothe Plus Shampoo	Soothe Plus Conditioner	Soothe Plus Treatment	Protect Leave-In Conditioner
Pre-Coloring treatment for resistant hair			Massage lather into hair. Leave second application on for 5 minutes.				Cover hair. 10-15 minutes with low to medium heat.						
Pre-Coloring treatment for damaged hair													
Post-Coloring	Use correct product according to wet stretch test result.												
Poor scalp													
Curl	Use correct product according to wet stretch test result.								Pre-wrap				
Dry ends prior to Color									6 pumps per head				
Protection against seawater, chlorine, UV and blow drying													

Notes:

- 1) Towel blot before treatments/reconstructors and conditioners
- 2) Only apply Color to hair with stretch
- 3) Conditioner can be applied over treatment/reconstructor, this doesn't apply to color.



Technical Assistance: 1-888-213-4744 ext: 902 | Online Ordering: organicsalonsystems.com

Organic Care Systems - Directions for Use

Aqua Boost Shampoo

Use full strength. Apply to wet hair. Massage lather throughout. Repeat. For optimum results allow second lather to remain on the hair for two minutes.

Aqua Boost Reconstructor

Apply a small amount of the treatment to clean, towel-dried hair. Leave for 5-15 minutes. Rinse thoroughly.

Aqua Boost Conditioner

Apply a small amount to clean, towel-dried hair. Leave for 1-5 minutes. Rinse thoroughly.

Power Build Shampoo

Use full strength. Apply to wet hair. Massage lather throughout. Repeat. For optimum results allow second lather to remain on the hair for two minutes.

Power Build Reconstructor

Apply a small amount of the treatment to clean, towel-dried hair. Leave for 5-15 minutes. Rinse thoroughly.

Revamp

Apply a small amount to clean, towel-dried hair. Gently comb through and leave on for 15 minutes. Rinse thoroughly with warm water and condition with Power Build Conditioner.

Power Build Conditioner

Apply a small amount to clean, towel-dried hair. Leave for 1-5 minutes. Rinse thoroughly.

Status Quo Shampoo

Use full strength. Apply to wet hair. Massage lather throughout. Repeat. For optimum results allow second lather to remain on the hair for two minutes.

Status Quo Conditioner

Apply a small amount to clean, towel-dried hair. Leave for 1-5 minutes. Rinse thoroughly.

Protect Leave-In Conditioner

Apply to clean, wet hair, comb through and style as desired. May also be used after swimming to help protect the hair from damage caused by the seawater, chlorine and sunlight.

Soothe Plus Shampoo

Use full strength. Apply on wet hair. Massage lather throughout. Repeat. For optimum results allow second lather to remain on the hair and scalp for 2 minutes. Rinse thoroughly. Due to the gentle nature of this shampoo and the natural ingredients used in it, the first wash will only produce a small lather. The second wash will give a creamy lather.

Soothe Plus Treatment

Spray an even amount onto the scalp or skin where required. Apply Soothe Plus Conditioner, leave for 5 minutes and rinse thoroughly. Treatment can be used inbetween washing. Spray directly on the scalp and skin as required.

Soothe Plus Conditioner

Apply a small amount to clean, towel-dried hair. Massage into the scalp and leave for 1-5 minutes. Rinse thoroughly.

Warnings for all Products

Keep out of children's reach. External use only. Avoid contact with eyes.





Technical Assistance: 1-888-213-4744 ext: 902 | Online Ordering: organicsalonsystems.com

Organic Care Systems - Specialist Treatment

To remove the build-up from two-in-one shampoos and henna

Shampoo the hair twice using a cleansing shampoo. Using a sponge work vodka through the hair and leave on for 15 minutes, rinse and shampoo with Aqua Boost Shampoo twice, leaving second lather on for 5 minutes. Rinse and apply Power Build Reconstructor, leave on for 15 minutes, rinse and apply Aqua Boost Conditioner for 5 minutes. Rinse off. If you are following this treatment with a chemical service, do not use the conditioner.



Organic Care Systems - Active Ingredients



Helianthus Annuus (Sunflower) Extract

A natural product derived from the concentrated extract of actives of sunflower seed. The action of pollution, sun damage and UV irradiation all cause free radicals to form, which damage the cuticle layers and allow the protein in hair to leak out. This weakens the hair structure and causes Color loss on normal hair. The action of free radicals, mainly caused by the action of the sun's UV irradiation, accelerates the destruction on the surface of the hair leading to cracking of the cuticle. This induces the breakdown of the intercellular cement and allows leakage of the protein and loss of moisture.

This ingredient is proven to:

- neutralize free radicals
- protect from UV irradiation
- reduce Color fade both on normal and Color treated hair
- ease combing when wet
- help as a thermal barrier
- improve moisture retention.



Hydrolyzed Wheat Protein and Gluten

100% active multi-molecular weight protein complex that also holds well to the hair. In addition, it has moisturising qualities, thus avoiding the possibility of the hair going rigid. High in the amino acid tyrosine, it helps the hair to absorb hair Color molecules.

This protein complex:

- has multi-molecular weights
- has positively charged IONs
- attracts to damaged negative sites
- improves wet and dry hair strength
- is rich in tyrosine - helps hair Color molecules attach
- adds a moisture molecule in addition.

Organic Control Systems - The Range

Organic Control Systems No Plastic Styling is the first range of styling products, which are completely plastic free. Bonds made with traditional plastic-based products tend to be brittle and break under vigorous movement. This causes the style to lose shape and require re-styling or touching up to maintain a freshly styled look over the course of a day.

The unique formula of naturally-derived ingredients used in Organic Control Systems allows the hair to move, whilst maintaining its natural look and feel. The result is:

- exceptional curl memory
- dynamic curl retention
- anti-frizz
- lustrous shine.

The complete range is suitable for all hair types.

Hairspray

Contains a natural blend of proteins and conditioners, which protect the hair after the styling process, as well as adding body and shine.

Spray Gel

Contains natural proteins, conditioners and UV filters, which do not damage or dry the hair. They provide protection during and after the styling process.

Glaze

Contains a unique blend of plant proteins and conditioners, which provide the hair with hold, body and shine. The gentle alcohol-free formulation increases the conditioning effects and does not damage the hair, even if used regularly.

Volume Mousse

Gives hair great hold, body and shine, while the carefully chosen ingredients provide protection and anti-humidifiers.

Spray Gloss

This unique naturally-based product provides anti-frizz and high shine. The exceptional, lightweight formula includes calendula oil for increased shine and green tea extracts as an anti-oxidant.

Gloss Serum

This concentrated serum provides hair with high shine and anti-frizz benefits. It provides a concentrated solution for frizzy hair, providing shine and manageability.



Organic Control Systems - Summary

Hair Type	Hairspray	Volume Mousse	Glaze	Spray Gel	Spray Gloss	Gloss Serum
All hair types						
Fine hair		For a softer hold				
Extremely fine hair		Mixed with Spray Gel		Mixed with Volume Mousse		
Thick hair						
Curly hair						
Wiry, brittle hair						Pre- and post-blowing drying
For shine						



better hair, better result, better you

Organic Connect - The Range

The Organic Connect range has been launched as a result of demand for certain products by our customers.

Our company objective has always been to manufacture hair products, which are as natural as possible. This ethos equally applies to the Organic Connect range, which comprises a selection of highly effective products. However, due to the nature of some of the ingredients used in them, we feel that these products do not fully fit into the Organic Care Systems and Organic Control Systems ranges.

As new ingredients become available and we are able to reformulate these products, we will move them out of the Organic Connect range into Organic Care Systems or Organic Control Systems. In the meantime, however, we hope they will provide a solution to some of your hairdressing needs.

The range comprises the following products:

Silver Shampoo

This is a gentle shampoo for use on pre-lightened hair and white / grey hair. It is an excellent product to use after lightening or highlighting hair, in order to maintain a clean, clear Color. It is also ideal for more mature clients with grey / white hair. The violet tones in this shampoo reduce unwanted orange / yellow in hair. This protein and moisture-based shampoo is pH balanced to keep the cuticle closed, enhancing shine.

Note: This shampoo contains a Colorant. In some cases, this may cause an allergic reaction, so a sensitivity test is advised at least 48 hours prior to use.

Hydrate Leave-In Conditioner

This is a very rich, moisturising conditioner for dry, brittle hair. It is designed to leave hair silky soft with a deep natural shine. This product is ideal for clients with dry hair and is particularly suitable for use in warm climates. Hydrate Leave-In Conditioner imparts moisture into the cuticle, giving the hair greater flexibility, shine and lustre.

Finale Hairspray

Finale Hairspray is a firm hold hairspray, which is gentle on the hair. While Organic Control Systems Hairspray provides a soft, natural hold, Finale Hairspray caters for clients who like a strong hold to their finished look and is especially good for hair-up styles. The unique blend of conditioners leaves the hair shiny, with natural looking hold.

Thermal 2 Twenty

Thermal 2 Twenty is a revolutionary new styling product, designed to protect hair up to temperatures of 220° C.

Regular use of thermal styling appliances such as straighteners, tongs, etc. subject the hair to high temperatures, which can damage the hair by removing moisture. The hair is left dry, brittle and fragile, often causing the hair to break. In addition, the proteins in hair can become unstable and the hair's structure can be affected. Hair, therefore, requires protection from such damaging effects of heat. Thermal 2 Twenty is designed to prevent such damage from occurring.

Thermal 2 Twenty has been designed to offer protection from heat caused by styling appliances and works up to 220° C, which exceeds many competitive products on the market.

Thermal styling raises the cuticle of the hair, which can create friction during combing. Thermal 2 Twenty improves the smoothness of the hair's surface and reduces friction, which allows for easier combing.

Furthermore, it protects against significant loss of hair strength caused by heat. Finally, Thermal 2 Twenty also offers mild hold properties. For more intense conditioning, leave Thermal 2 Twenty on the hair for five minutes before styling. Overall, hair is protected from considerable damage, is easier to comb and dry or straighten. Hair is left smooth, straight and glossy.



Organic Connect - Summary

Usage	Silver Shampoo	Hydrate Leave-In Conditioner	Thermal 2 Twenty	Finale
For white/grey hair				
For pre-lightened hair				
For coarse hair				
For use with styling appliances				
For finishing styles				



Key Ingredients - Organic Color Systems Color Gel

Ingredient	Function	Source	Why We Use It
PEG-2 Soyamine	Emulsifier	Naturally-derived from soya bean	A polymer made from the fatty acids of soya beans. Acts as an emulsifier and surfactant. It is alkaline and so raises the pH of the hair, softening the cuticle. It opens the hair at a much lower pH than ammonia.
Cocamide DEA	Surfactant, thickener	Naturally-derived from coconut	This is a fatty acid derivative of diethanolamine and coconut oil. It is used to increase foaming capacity and/or stabilise foam as well as thicken water-based products.
Alcohol Denatured	Viscosity decreasing agent	Naturally-derived from corn	Denatured alcohol is regular drinking alcohol with a denaturant added to it so that it has a bad taste. It is formed by the fermentation of sugars. It is used to reduce the thickness of the Color.
Oleic Acid	Surfactant	Naturally-derived from olive oil, as well as grapeseed, sea buckthorn and sesame oil	This is a fatty acid that occurs naturally in some foods. Oleic acid is a surfactant or cleansing agent. It also neutralizes the ethanolamine.
Ethanolamine	pH adjuster	Naturally-derived from coconut	Clear, Colorless viscous liquid used mainly in hair Colors. It controls the pH of hair dyes.
Hydrolyzed Wheat Protein	Conditioner	Natural wheat	Natural wheat protein. It provides a combination of moisture-balancing and film-forming properties that give hair better body, control and a smoother feel. This product leaves the hair with a mirror-like shine with excellent conditioning effects.

Key Ingredients - Organic Color Systems Color Gel cont...

Ingredient	Function	Source	Why We Use It
Ascorbic Acid	Anti-oxidant	Natural vitamin C	Commonly known as Vitamin C. It slows the deterioration of the product caused by exposure to the air. It prevents or slows down product spoilage from rancidity. Anti-oxidants play a vital role in maintaining the quality, integrity and safety of cosmetic products.
PEG-7 Coco Glycerides	Conditioner, anti-irritant	Naturally-derived	PEG-7 Glyceryl Cocoate is used in the formulation of hair dyes, shampoos and various cosmetics. This is an emollient derived from coconut oil and glycerin. It is an emulsifier and a surfactant with moisturising effects. It is ideally suited for hair care because of its luxurious after-feel.



Key Ingredients - Liquid Activator

Ingredient	Function	Source	Why We Use It
Hydrogen Peroxide	Oxidising agent	Synthetic	This is a clear, Colorless liquid. In cosmetics it has numerous functions, from anti-microbial to oxidising. It decomposes into water and oxygen.
Anthemis Nobilis extract	Anti-inflammatory	Organic chamomile flower	This extract is made from the flower of the chamomile plant. It is used in the formulation of many cosmetic products and is extremely useful as a conditioning and anti-inflammatory agent for both hair and skin.
Etidronic Acid	Chelating agent	Synthetic	This is a pH adjuster as well as a chelating agent. It stabilises the peroxide bonds in this product, as well as limiting the damage caused by bleaching and Coloring.
Polyquaternium-10	Conditioner, film former	Naturally-derived from plant cellulose	It enhances the appearance and feel of the hair, by increasing hair body, suppleness or sheen or by improving the texture of hair that has been damaged physically or by chemical treatment. It also reduces static electricity.

Key Ingredients - Cream Activator

Ingredient	Function	Source	Why We Use It
Hydrogen Peroxide	Oxidising agent	Synthetic	This is a clear, Colorless liquid. In cosmetics it has numerous functions, from anti-microbial to oxidising. It decomposes into water and oxygen.
Cetyl Alcohol	Viscosity builder	Naturally-derived from plant	A white waxy solid that is a fatty alcohol produced from natural fats. It has a number of functions in personal care products. It keeps the emulsion from separating into its oil and liquid components. It is also used as emollients, as well as to increase the viscosity of emulsion.
Cetrimonium Chloride	Emulsifier	Naturally-derived from plant	Prevents the build-up of static electricity, destroys or inhibits the growth of micro-organisms and helps water to mix with oil and dirt so they can be rinsed away. It also helps to form the creamy base.
Ceteth-2	Emulsifier	Naturally-derived from plant	This waxy solid helps other ingredients to dissolve. It forms emulsions, as well as cleaning the skin and hair by helping water to mix with oil and dirt, so that these substances can be rinsed away.
Ceteareth-25	Solubiliser	Naturally-derived from plant	This is a waxy solid which helps other ingredients to dissolve in a solvent. It is made from cetearyl alcohol which is a mixture of cetyl and stearyl alcohol. These are both derived from plants.

Key Ingredients - Naturlite

Ingredient	Function	Source	Why We Use It
Potassium Persulfate	Oxidiser	Synthetic	Helps to deColorise and lighten the hair. Less damaging than ammonium persulfate.
Sodium Silicate	Viscosity builder, pH adjuster	Synthetic	Alters the pH of the product to the desired level.
Silica	Bulking agent, anti-caking agent	Synthetic	Stabilises the viscosity of the bleach/peroxide mixture. Prevents the powder forming lumps or cakes and remain free-flowing.
Hydroxyethylcellulose	Viscosity increasing agent	Natural plant extract	Thickens the bleach/peroxide mixture.
Sodium Lauryl Sulfate	Foamer	Synthetic	Allows for the cleaning of the hair. Used in very small quantities.
Hydrolyzed Wheat Protein	Conditioner	Natural wheat	Natural wheat protein. It provides a combination of moisture-balancing and film-forming properties that give hair better body, control and a smoother feel. This product leaves the hair with a mirror-like shine with excellent conditioning effects.



Technical Assistance: 1-888-213-4744 ext: 902 | Online Ordering: organicsalonsystems.com

Key Ingredients - Organic Care Systems Shampoos

Ingredient	Function	Source	Why We Use It
Sodium C14-16 Olefin Sulfonate	Surfactant	Synthetic	This synthetic surfactant is commonly used as a replacement of SLS/SLES. It is regarded to be sulfate-free. It works with other surfactants to clean the hair.
Coco-glucoside	Surfactant	Naturally-derived from coconut	This ingredient works as a surfactant, foaming agent, conditioner and emulsifier. It helps increase the foaming capacity of shampoos. It has the ability to smooth out the hair structure and increase manageability. It mildly cleanses the hair and enhances the cleaning and moisturising properties of other ingredients in the shampoo. It is derived from coconut oil and fruit sugar.
Cocamidopropyl Betaine	Surfactant	Naturally-derived from coconut	This is a surfactant derived from coconut oil. It also functions as a thickener and reduces the irritation that other surfactants can cause. It is of medium strength and does not irritate the skin or mucous membranes.
Panthenol	Conditioner	Naturally-derived vitamin B	This is pro-vitamin B5, commonly called the beautifier. Its soothing and calming properties are useful for treating irritated and sensitive skin.

Key Ingredients - Organic Care Systems Shampoos cont...

Ingredient	Function	Source	Why We Use It
PEG-120 Methyl Glucose Dioleate	Viscosity builder	Naturally-derived from corn	A corn-derived thickener. It is non-irritating to eyes and can significantly reduce eye irritation normally associated with harsh surfactants. It produces products that are easy to pour and with pleasing foaming ability.
Hydrolyzed Wheat Protein	Conditioner	Natural wheat	Natural wheat protein. It provides a combination of moisture-balancing and film-forming properties that give hair better body, control and a smoother feel. This product leaves the hair with a mirror-like shine with excellent conditioning effects.
Laurylmethylgluceth-10 Hydroxypropyldimonium Chloride	Conditioner	Naturally-derived from corn	An exceptional moisturising and conditioning ingredient. It is derived from corn. It provides enhanced foaming properties and is very mild.
Anthemis Nobilis extract	Anti-inflammatory	Organic chamomile flower	This extract is made from the flower of the chamomile plant. It is used in the formulation of many cosmetic products and is extremely useful as a conditioning and anti-inflammatory agent for both hair and skin.
Symphytum Officinale extract	Conditioner	Organic comfrey root	Comfrey contains vitamin B12 and proteins. It soothes and protects while promoting healthy skin and scalp and moisturising.
Simmondsia Chinensis oil	Conditioner	Organic jojoba seed	Oil is derived from the seed of a desert shrub. Jojoba oil is a hair conditioner with a structure very similar to hair sebum.

Key Ingredients - Organic Care Systems Shampoos cont...

Ingredient	Function	Source	Why We Use It
Helianthus Annuus oil	Conditioner	Organic sunflower seed	This is a clear, amber Colored oil. It is used in a wide number of personal care products. It is an excellent skin and hair conditioning agent. It supplies more vitamin E than any other vegetable oil.
Prunus Amygdalus Dulcis oil	Conditioner	Organic sweet almond	This is a pale, straw-Colored oil obtained from almonds. When used in shampoos and conditioners, it imparts a desirable sheen to the hair.



better hair, better result, better you



Technical Assistance: 1-888-213-4744 ext: 902 | Online Ordering: organicsalonsystems.com

Key Ingredients - Organic Care Systems Reconstructors

Ingredient	Function	Source	Why We Use It
Glycol Stearate	Emulsifier	Naturally-derived from plant	This stabilises the cream base of the treatment. It is derived from stearic acid, a common fatty acid made from plants.
Behentrimonium Chloride	Anti-static	Synthetic	This is an anti-static as well as an anti-microbial agent. It kills bacteria as well as prevent their growth.
Cetearyl Alcohol	Viscosity builder	Naturally-derived from plant	This fatty alcohol is a white, waxy solid. It helps to keep the treatment from separating.
Polyquaternium-37, Propylene Glycol Dicaprylate/Dicaprate PPG-1 Trideceth-6	Viscosity builder	Synthetic	This is a polymer that thickens the product, as well as providing a superior sensory feel to the hair.
Hydrolyzed Wheat Gluten, Hydrolyzed Wheat Protein	Conditioner	Natural wheat	This is a wheat-based protein which penetrates deeply into the hair cortex with efficient immediate effect just after 5 minutes. It also forms a significant protective film on the hair surface, preventing hair breakage by more than 80%.
Prunus Amygdalus Dulcis oil	Conditioner	Organic sweet almond	This is a pale, straw-Colored oil obtained from almonds. When used in shampoos and conditioners, it imparts a desirable sheen to the hair.
Simmondsia Chinensis oil	Conditioner	Organic jojoba seed	Oil is derived from the seed of a desert shrub. Jojoba oil is a hair conditioner with a structure very similar to hair sebum.



Technical Assistance: 1-888-213-4744 ext: 902 | Online Ordering: organicsalonsystems.com

Key Ingredients - Organic Care Systems Reconstructors

Ingredient	Function	Source	Why We Use It
Helianthus Annuus oil	Conditioner	Organic sunflower seed	This is a clear, amber Colored oil. It is used in a wide number of personal care products. It is an excellent skin and hair conditioning agent. It supplies more vitamin E than any other vegetable oil.
Aloe Barbadensis juice	Soothing agent	Organic aloe vera leaf	Aloe-derived material has fungicidal, anti-microbial and anti-viral activity. It enhances the appearance of the dry or damaged skin and scalp by reducing flaking, inflammation and restoring suppleness.
Anthemis Nobilis extract	Anti-inflammatory	Organic chamomile flower	This extract is made from the flower of the chamomile plant. It is used in the formulation of many cosmetic products and is extremely useful as a conditioning and anti-inflammatory agent for both hair and skin.
Symphytum Officinale extract	Conditioner	Organic comfrey root	Comfrey contains vitamin B12 and proteins. It soothes and protects while promoting healthy skin and scalp and moisturising.
Panthenol	Conditioner	Naturally-derived vitamin B	This is pro-vitamin B5, commonly called the beautifier. Its soothing and calming properties are useful for treating irritated and sensitive skin.

Key Ingredients - Organic Care Systems Conditioners

Ingredient	Function	Source	Why We Use It
Cetyl Alcohol	Viscosity builder	Naturally-derived from plant	A white, waxy solid that is a fatty alcohol produced from natural fats. It has a number of functions in personal care products. It keeps the emulsion from separating into its oil and liquid components. It is also used as emollients, as well as to increase the viscosity of emulsion.
Stearyl Alcohol	Viscosity builder	Naturally-derived from plant	A white, waxy solid that is a fatty alcohol produced from natural fats. It has a number of functions in personal care products. It keeps the emulsion from separating into its oil and liquid components. It is also used as emollients, as well as to increase the viscosity of emulsion.
Stearalkonium Chloride	Anti-static agent	Naturally-derived from plant	Anti-static ingredient in hair care products. It alters the electrical properties of raw materials or human body surfaces by reducing their tendency to acquire an electrical charge, thus minimising 'fly-away' hair. It attracts and binds proteins and increases lustre and improves the feel and wet/dry combing of the hair. It is made from stearic acid, which is a fatty acid found in plants.
Cetrimonium Chloride	Emulsifier	Naturally-derived from plant	Prevents the build-up of static electricity, destroys or inhibits the growth of micro-organisms and helps water to mix with oil and dirt so they can be rinsed away. It also helps to form the creamy base of the conditioner.



Technical Assistance: 1-888-213-4744 ext: 902 | Online Ordering: organicsalonsystems.com

Key Ingredients - Organic Care Systems Conditioners

Ingredient	Function	Source	Why We Use It
Aloe Barbadensis juice	Soothing agent	Organic aloe vera leaf	Aloe-derived material has fungicidal, anti-microbial and anti-viral activity. It enhances the appearance of the dry or damaged skin and scalp by reducing flaking, inflammation and restoring suppleness.
Anthemis Nobilis extract	Anti-inflammatory	Organic chamomile flower	This extract is made from the flower of the chamomile plant. It is used in the formulation of many cosmetic products and is extremely useful as a conditioning and anti-inflammatory agent for both hair and skin.
Symphytum Officinale extract	Conditioner	Organic comfrey root	Comfrey contains vitamin B12 and proteins. It soothes and protects while promoting healthy skin and scalp and moisturising.
Simmondsia Chinensis oil	Conditioner	Organic jojoba seed	Oil is derived from the seed of a desert shrub. Jojoba oil is a hair conditioner with a structure very similar to hair sebum.
Helianthus Annuus oil	Conditioner	Organic sunflower seed	This is a clear, amber Colored oil. It is used in a wide number of personal care products. It is an excellent skin and hair conditioning agent. It supplies more vitamin E than any other vegetable oil.



Technical Assistance: 1-888-213-4744 ext: 902 | Online Ordering: organicsalonsystems.com

Key Ingredients - Organic Care Systems Conditioners

Ingredient	Function	Source	Why We Use It
Panthenol	Conditioner	Naturally-derived vitamin B	This is pro-vitamin B5, commonly called the beautifier. Its soothing and calming properties are useful for treating irritated and sensitive skin.
Prunus Amygdalus Dulcis oil	Conditioner	Organic sweet almond	This is a pale, straw-Colored oil obtained from almonds. When used in shampoos and conditioners, it imparts a desirable sheen to the hair.



Technical Assistance: 1-888-213-4744 ext: 902 | Online Ordering: organicsalonsystems.com

Key Ingredients - Organic Care Systems Soothe Plus Shampoo

Ingredient	Function	Source	Why We Use It
Sodium C14-16 Olefin Sulfonate	Surfactant	Synthetic	This synthetic surfactant is commonly used as a replacement of SLS/SLES. It is regarded to be sulfate-free. It works with other surfactants to clean the hair.
Lauryl Glucoside	Surfactant	Naturally-derived from plant	100% plant-derived mild cleaner. Significantly milder to the skin than SLS/SLES.
Foeniculum Vulgare extract	Anti-oxidant, anti-inflammatory, anti-irritant	Organic fennel seed	This extract protects the skin and hair from damaging peroxides as well as acts as an anti-oxidant, anti-inflammatory and anti-irritant.
Cocamidopropyl Betaine	Surfactant	Naturally-derived from coconut	This is a surfactant derived from coconut oil. It also functions as a thickener and reduces the irritation that other surfactants can cause. It is of medium strength and does not irritate the skin or mucous membranes.
PEG -120 Methyl Glucose Dioleate	Viscosity builder	Naturally-derived from vegetable	A vegetable-derived thickener. It is non-irritating to eyes and can significantly reduce eye irritation normally associated with harsh surfactants. It produces products that are easy to pour and with pleasing foaming ability.
Salix Alba extract	Anti-inflammatory, anti-irritant	Organic willow bark	Extract from the willow bark has anti-microbial and anti-inflammatory properties. It also enhances skin cell turnover, removing dead cells and generally improving the appearance of the skin and scalp.



Technical Assistance: 1-888-213-4744 ext: 902 | Online Ordering: organicsalonsystems.com

Key Ingredients - Organic Care Systems Soothe Plus Shampoo

Ingredient	Function	Source	Why We Use It
Hydrolyzed Wheat Protein	Conditioner	Natural wheat	Natural wheat protein. It provides a combination of moisture-balancing and film-forming properties that give hair better body, control and a smoother feel. This product leaves the hair with a mirror-like shine with excellent conditioning effects.
Tripleurospermum Maritima extract	Anti-oxidant	Sea mayweed	Soothes the scalp and protects against free radicals. Anti-inflammatory and anti-oxidant. Contains 11 amino acids, as well as vitamins and minerals.
Panthenol	Conditioner	Naturally-derived vitamin B	This is pro-vitamin B5, commonly called the beautifier. Its soothing and calming properties are useful for treating irritated and sensitive skin.
Glyceryl Laurate	Surfactant	Naturally-derived	This along with Cocamidopropyl Betaine forms a mild surfactant and product thickener. It replaces Cocamide DEA and so eliminates the questions associated with this raw material.
Aloe Barbadensis juice	Soothing agent	Organic aloe vera leaf	Aloe-derived material has fungicidal, anti-microbial and anti-viral activity. It enhances the appearance of the dry or damaged skin and scalp by reducing flaking, inflammation and restoring suppleness.
Symphytum Officinale extract	Conditioner	Organic comfrey root	Comfrey contains vitamin B12 and proteins. It soothes and protects while promoting healthy skin and scalp and moisturising.



Technical Assistance: 1-888-213-4744 ext: 902 | Online Ordering: organicsalonsystems.com

Key Ingredients - Organic Care Systems Soothe Plus Shampoo

Ingredient	Function	Source	Why We Use It
Anthemis Nobilis extract	Anti-inflammatory	Organic chamomile flower	This extract is made from the flower of the chamomile plant. It is used in the formulation of many cosmetic products and is extremely useful as a conditioning and anti-inflammatory agent for both hair and skin.
Tetrasodium Glutamate Diacetate	Chelating agent	Naturally-derived	This chelating agent is a green alternative, made mainly from sugar waste material. It is based on a natural and sustainable source. It is readily biodegradable with a small ecological footprint. It is not irritating to skin and eyes and by binding to calcium and other hard water metal ions it helps to enhance the product's shelf life.
Geranium Maculatum oil	Anti-inflammatory	Organic geranium	Essential oil that is useful in the treatment of oily, clogged skin, dermatitis and eczema.
Citrus Aurantium Bergamia oil	Anti-septic	Organic bergamot fruit	Essential oil useful in the treatment of oily skin and scalp.
Usnea Barbata extract	Fungicide, bactericide	Natural lichen	An extract from lichen (sea algae) with anti-microbial properties.



Technical Assistance: 1-888-213-4744 ext: 902 | Online Ordering: organicsalonsystems.com

Key Ingredients - Organic Care Systems Soothe Plus Treatment

Ingredient	Function	Source	Why We Use It
Foeniculum Vulgare extract	Anti-oxidant, anti-inflammatory, anti-irritant	Organic fennel seed	This extract protects the skin and hair from damaging peroxides, as well as acting as an anti-oxidant, anti-inflammatory and anti-irritant.
Aloe Barbadensis juice	Soothing agent	Organic aloe vera leaf	Aloe-derived material has fungicidal, anti-microbial and anti-viral activity. It enhances the appearance of the dry or damaged skin and scalp by reducing flaking, inflammation and restoring suppleness.
Tripleurospermum Maritima extract	Anti-oxidant	Sea mayweed	Soothes the scalp and protects against free radicals. Anti-inflammatory and anti-oxidant. Contains 11 amino acids, as well as vitamins and minerals.
Glucose Oxidase, Lactoperoxidase	Natural preservative	Natural	This mimics a naturally occurring anti-microbial, anti-oxidant protect system found in tears and saliva. It uses a metabolic process that inhibits and eventually kills microbes.
Glucose	Natural preservative	Natural	Part of the natural preservative system.
Tetrasodium Glutamate Diacetate	Chelating agent	Naturally-derived	This chelating agent is a green alternative, made mainly from sugar waste material. It is based on a natural and sustainable source. It is readily biodegradable with a small ecological footprint. It is not irritating to skin and eyes and by binding to calcium and other hard water metal ions it helps to enhance the product's shelf life.



Technical Assistance: 1-888-213-4744 ext: 902 | Online Ordering: organicsalonsystems.com

Key Ingredients - Organic Care Systems Soothe Plus Conditioner

Ingredient	Function	Source	Why We Use It
Foeniculum Vulgare extract	Anti-oxidant, anti-inflammatory, anti-irritant	Organic fennel seed	This extract protects the skin and hair from damaging peroxides as well as acts as an anti-oxidant, anti-inflammatory and anti-irritant agent.
Cetyl Alcohol	Viscosity builder	Naturally-derived from plant	A white, waxy solid that is a fatty alcohol produced from natural fats. It has a number of functions in personal care products. It keeps the emulsion from separating into its oil and liquid components. It is also used as emollients as well as to increase the viscosity of emulsion.
Stearyl Alcohol	Viscosity builder	Naturally-derived from plant	A white, waxy solid that is a fatty alcohol produced from natural fats. It has a number of functions in personal care products. It keeps the emulsion from separating into its oil and liquid components. It is also used as emollients as well as to increase the viscosity of emulsion.
Salix Alba extract	Anti-inflammatory, anti-irritant	Organic willow bark	Extract from the willow bark has anti-microbial and anti-inflammatory properties. It also enhances skin cell turnover, removing dead cells and generally improving the appearance of the skin and scalp.
Tripleurospermum Maritima extract	Anti-oxidant	Sea mayweed	Soothes the scalp and protects against free radicals. Anti-inflammatory and anti-oxidant. Contains 11 amino acids, as well as vitamins and minerals.

Key Ingredients - Organic Care Systems Soothe Plus Conditioner cont...

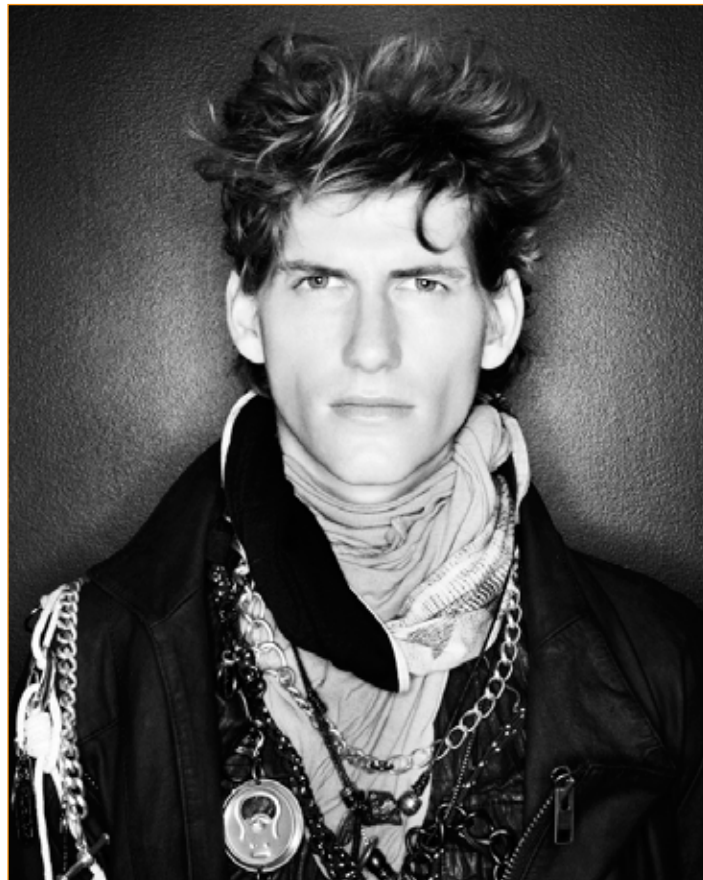
Ingredient	Function	Source	Why We Use It
Cetrimonium Chloride	Emulsifier	Naturally-derived from plant	Prevents the build-up of static electricity, destroys or inhibits the growth of micro-organisms and helps water to mix with oil and dirt so they can be rinsed away. It also helps to form the creamy base of the conditioner.
Stearalkonium Chloride	Anti-static agent	Naturally-derived from plant	Anti-static ingredient in hair care products. It alters the electrical properties of raw materials or human body surfaces by reducing their tendency to acquire an electrical charge thus minimising 'fly away' hair. It attracts and binds proteins and increases lustre and improves the feel and wet/ dry combing of the hair. It is made from stearic acid which is a fatty acid found in plants.
PEG-100 Stearate	Surfactant	Synthetic	This ingredient cleans the skin and hair by helping water to mix with oil and dirt so they can be rinsed away.
Dimethicone	Conditioning agent	Synthetic	A silicone which leaves the hair with a soft, velvety feel without a greasy residue.
Oleth-10	Emulsifier	Naturally-derived from plant	This ingredient cleans the skin and hair by helping water to mix with oil and dirt so they can be rinsed away.
Aloe Barbadensis juice	Soothing agent	Organic aloe vera leaf	Aloe-derived material has fungicidal, anti-microbial and anti-viral activity. It enhances the appearance of the dry or damaged skin and scalp by reducing flaking, inflammation and restoring suppleness.

Key Ingredients - Organic Care Systems Soothe Plus Conditioner cont...

Ingredient	Function	Source	Why We Use It
Symphytum Officinale extract	Conditioner	Organic comfrey root	Comfrey contains vitamin B12 and proteins. It soothes and protects while promoting healthy skin and scalp and moisturising.
Anthemis Nobilis extract	Anti-inflammatory	Organic chamomile flower	This extract is made from the flower of the chamomile plant. It is used in the formulation of many cosmetic products and is extremely useful as a conditioning and anti-inflammatory agent for both hair and skin.
Tetrasodium Glutamate Diacetate	Chelating agent	Naturally-derived	This chelating agent is a green alternative, made mainly from sugar waste material. It is based on a natural and sustainable source. It is readily biodegradable with a small ecological footprint. It is not irritating to skin and eyes and by binding to calcium and other hard water metal ions it helps to enhance the product's shelf life.
Geranium Maculatum oil	Anti-inflammatory	Organic geranium	Essential oil that is useful in the treatment of oily, clogged skin, dermatitis and eczema.
Citrus Aurantium Bergamia oil	Anti-septic	Organic bergamot fruit	Essential oil useful in the treatment of oily skin and scalp.
Prunus Amygdalus Dulcis oil	Conditioner	Organic sweet almond	This is a pale, straw-colored oil obtained from almonds. When used in shampoos and conditioners, it imparts a desirable sheen to the hair.

Key Ingredients - Organic Care Systems Soothe Plus Conditioner cont...

Ingredient	Function	Source	Why We Use It
Helianthus Annuus oil	Conditioner	Organic sunflower seed	This is a clear, amber Colored oil. It is used in a wide number of personal care products. It is an excellent skin and hair conditioning agent. It supplies more vitamin E than any other vegetable oil.
Simmondsia Chinensis oil	Conditioner	Organic jojoba seed	Oil is derived from the seed of a desert shrub. Jojoba oil is a hair conditioner with a structure very similar to hair sebum.
Usnea Barbata extract	Fungicide, bactericide	Natural lichen	An extract from lichen (sea algae) with anti-microbial properties.



better hair, better result, better you

Key Ingredients - Organic Curl Systems Perm Lotion

Ingredient	Function	Source	Why We Use It
Cysteamine HCL	Hair waving and straightening agent	Synthetic	This is a hair straightening ingredient. It straightens the hair at a lower pH and is milder than ammonium thioglycolate. It helps to soften the inner structure of the hair so it can be molded by the shape of the roller.
Oleth-10	Emulsifier	Naturally-derived from plant	This ingredient cleans the skin and hair by helping water to mix with oil and dirt so they can be rinsed away.
PVP	Binder, film former	Synthetic	This forms a transparent, glossy film on the hair. It helps to hold the perm by inhibiting the hair's ability to absorb moisture.
Amodimethicone	Hair conditioner	Synthetic	These three ingredients are part of one raw material which give shine and volume to the hair without build-up.
Cetrimonium Chloride	Emulsifier, conditioner	Naturally-derived from plant	
Trideceth-12	Emulsifier	Synthetic	
Pentasodium Pentetate	Chelating agent	Synthetic	This inactivates ions such as calcium and magnesium to maintain stability and appearance of the finished product. It also prevents these metals from being deposited onto the hair, skin and scalp.
BHA	Anti-oxidant	Synthetic	This prevents or slows down product spoilage from rancidity. It is essential in maintaining the quality, integrity and safety of the finished product.

Key Ingredients - Organic Curl Systems Perm Activator

Ingredient	Function	Source	Why We Use It
Glycerin	Humectant	Organic	This is a sugar alcohol obtained from natural sources. It is a humectant as well as a hair conditioning agent.
Triethanolamine	pH adjuster	Synthetic	This is a strong base, which is used to control the pH of cosmetics and personal care products.





Technical Assistance: 1-888-213-4744 ext: 902 | Online Ordering: organicsalonsystems.com

Key Ingredients - Organic Curl Systems Perm Neutralizer

Ingredient	Function	Source	Why We Use It
Sodium Laureth Sulfate	Cleansing agent	Synthetic	This cleaner ensures that no residue product is left on the hair.
Hydrogen Peroxide	Oxidising agent	Synthetic	This helps to re-bond the internal structure of the hair and hold its curl. If the hair is not properly neutralized, the curl will relax and straighten in one to two shampoos.
Hydrolyzed Wheat Protein	Conditioner	Natural wheat	This is a hair strengthening and conditioning agent that helps to maintain the moisture balance in the hair while increasing the hair shine.
Hydrolyzed Soy Protein	Conditioner	Natural soy	
Hydrolyzed Corn Protein	Conditioner	Natural corn	
Salicylic Acid	Anti-septic	Natural	Derived from the bark of the willow tree, salicylic acid also acts as an anti-inflammatory agent.
Anthemis Nobilis extract	Anti-inflammatory	Organic chamomile flower	This extract is made from the flower of the chamomile plant. It is used in the formulation of many cosmetic products and is extremely useful as a conditioning and anti-inflammatory agent for both hair and skin.

Key Ingredients - Organic Control Systems

Ingredient	Function	Source	Why We Use It
Hydrolyzed Maize Starch	Fixative, styling agent	Natural maize	This is a naturally-derived quaternary polymer for outstanding style retention, whilst maintaining the natural shine and feel of the hair. This is unlike plastic-based products, which typically leave the hair feeling stiff and crunchy. It also significantly reduces frizz and static.
Polyquaternium-72	Fixative, styling agent	Naturally-derived from plant	This exciting, new ingredient coats the hair with a flexible film, which produces moveable, high energy curls, as well as providing anti-frizz benefits and superb shine. It also provides a natural feel to the hair.
Calendula Officinalis extract	Imparts shine	Organic marigold flower	Anti-inflammatory, anti-irritant that promotes skin repair and healing. It soothes and protects the scalp and is a free radical scavenger. It is also a moisturiser.
Camellia Sinensis extract	Anti-oxidant	Organic green tea	Protects the hair from oxidative processes. It is recommended to treat sensitive and/or irritated skin and as a photo-protective agent. It is known to provide protection against the deleterious effects of UVB radiation.
Propylene Glycol	Moisturiser	Synthetic	Propylene Glycol is an organic molecule used as a humectant. It helps to prevent moisture loss in products, as well as holding the moisture to the hair. It provides excellent moisturising properties to the hair and scalp.

Key Ingredients - Organic Connect

Ingredient	Function	Source	Why We Use It
Helianthus Annuus oil	Conditioner	Organic sunflower seed	This is a clear, amber Colored oil. It is used in a wide number of personal care products. It is an excellent skin and hair conditioning agent. It supplies more vitamin E than any other vegetable oil.
Aloe Barbadensis juice	Soothing agent	Organic aloe vera leaf	Aloe-derived material has fungicidal, anti-microbial and anti-viral activity. It enhances the appearance of the dry or damaged skin and scalp by reducing flaking, inflammation and restoring suppleness.
Anthemis Nobilis extract	Anti-inflammatory	Organic chamomile flower	This extract is made from the flower of the chamomile plant. It is used in the formulation of many cosmetic products and is extremely useful as a conditioning and anti-inflammatory agent for both hair and skin.
Symphytum Officinale extract	Conditioner	Organic comfrey root	Comfrey contains vitamin B12 and proteins. It soothes and protects while promoting healthy skin and scalp and moisturising.
Simmondsia Chinensis oil	Conditioner	Organic jojoba seed	Oil is derived from the seed of a desert shrub. Jojoba oil is a hair conditioner with a structure very similar to hair sebum.
Prunus Amygdalus Dulcis oil	Conditioner	Organic sweet almond	This is a pale, straw-Colored oil obtained from almonds. When used in shampoos and conditioners, it imparts a desirable sheen to the hair.

Key Ingredients - Organic Connect cont...

Ingredient	Function	Source	Why We Use It
Glycerin	Humectant	Organic	This is a sugar alcohol obtained from natural sources. It is a humectant as well as a hair conditioning agent.
Sodium Laneth-40 Maleate/Styrene Sulfonate Copolymer	Heat protector	Synthetic	This protects from heat damage and loss of hair strength.
Citrus Dulcis extract	Anti-oxidant	Organic orange peel	Powerful anti-inflammatory agent.
Citrus Grandis extract	Anti-oxidant	Organic grapefruit seed	Provides moisturising and soothing effects. Rich in vitamins and fruit acids, which have invigorating and refreshing properties.



Quick Reference Guide - Organic Color Systems

Grey Coverage

Colors 1 to 8 are designed to cover grey hair. For resistant grey hair, use the NN series 4NN to 8NN.



Activators

0% (0 vol): designed to dilute
3% to make 1.5% to use as a
Color wash.

3% (10 vol):

for use as a demi-permanent or as a toner.

6% (20 vol):

for staying on the same base, for going darker
and for coverage of grey hair.

9% (30 vol):

lifts 1 to 2 shades and will achieve coverage on

grey hair.

12% (40 vol):

gives the maximum lift of 2 to 3 shades.

Cream Activator 12% (40 vol): gives 3 to 4 shades of lift with the Hi-Lift Colors.



Mixing



For normal Coloring techniques, mix the Color gel and the activator in equal quantities.
For Hi-Lift Colors, mix 1 part Color gel with 2 parts cream activator 12% (40 vol).

Developing

Apply the Color and place a plastic cap over the hair. Apply gentle heat for the first 10 to

15 minutes.

Do not use excessive heat; a temperature of around 40°C is recommended.

For normal Coloring techniques, a development time of 35 to 45 minutes is recommended.

For Hi-Lift Colors, the development time can be extended to 50 minutes or until the required Color is achieved.

Note: All Colors can be left on for longer apart from blonde Colors.



Removing the Color

It is essential to use Organic Care Systems shampoos and conditioners at the backwash, as this completes the Coloring process, as it closes the cuticle and returns the hair to pH5. At the backwash, add warm water to the Color and gently massage into a lather. The longer you massage, the better the coverage on grey hair will be. This will also ensure that all Color residues are removed from the scalp. Rinse thoroughly until the water runs clear. Apply Organic Care Systems Shampoo, lather and rinse, towel blot and spray Organic Care Systems Soothe Plus Treatment onto the scalp. Then apply Organic Care Systems Conditioner, ensuring that you leave on for 5 minutes. This will close the cuticle and return the hair and scalp back to pH5.



Quick Reference Guide - Naturlite and Naturlite Oil



Mixing instructions for off-the-scalp applications

Using the scoop provided, measure one scoop of Naturlite.

Then mix two scoops of the Naturlite Cream Activator and blend to a smooth paste.

Activators

Naturlite Cream Activator 3%: designed to give 1 shades of lift

Naturlite Cream Activator 6%: designed to give 2 shades of lift

Naturlite Cream Activator 9%: designed to give 2 to 3 shades of lift



Mixing instructions for on-the-scalp applications

Measure 2 scoops of Naturlite with 2 scoops of Naturlite Cream Activator 3%, 6%, 9%.

Blend to a smooth paste, add 1 scoop of Naturlite Oil and mix thoroughly.

Activators

Naturlite Cream Activator 3%: designed to give 1 shades of lift

Naturlite Cream Activator 6%: designed to give 2 shades of lift

Naturlite Cream Activator 9%: designed to give 2 to 3 shades of lift



Removal for both applications

Add water and gently massage. Rinse thoroughly until the water runs clear.

Apply Organic Care Systems Shampoo, lather and rinse, towel blot and spray

Organic Care Systems Soothe

Plus Treatment onto the scalp.

Then apply



Organic Care Systems Conditioner, ensuring that you leave on for 5 minutes. This will close the cuticle and return the hair to pH5.

Quick Reference Guide - Intensifiers

Intensifiers are designed to give deeper, brighter, more intense Colors

Red: Add into all natural Colors 4 to 10, all CR, BC, RC, FR and MH Colors. Increases red tones and gives a brighter, more vibrant, funky result.

Orange: Add into all natural Colors 4 to 10, all CR, BC, RC and FR Colors. Increases orange tones and gives a brighter, more vibrant, funky result.

Green: Add into 1 to 10, all AH Colors. Increases green tones, giving a flat ash tone, ideal as an anti-red.

Yellow: Add into all natural Colors 4 to 10, all GD, CR, BC, RC and FR Colors. Increases yellow tones, giving a brighter, more vibrant, funky result.

Violet: Add into all natural Colors 4 to 10, all MH and FR Colors. Increases violet tones, giving a brighter, more vibrant funky result.



Mixing

Removal

30ml to 50ml Color gel.

30ml to 50ml activator.

Mix thoroughly.

Add 25 to 30 pumps of intensifier and thoroughly blend into the Color mix.

As for Organic Color Systems.

Organic Color Systems Intensifiers as pastel highlights

Mixing

50ml Naturlite Cream Activator 3%, 6%, 9%.

Mix 1 scoop Naturlite and 1 scoop Naturlite Oil. Blend into a smooth paste.

Then add 10 to 30 pumps of intensifier. Blend into the mix.

Lifting Guide

Naturlite Cream Activator 3%: designed to give 1 to 2 shades of lift

Naturlite Cream Activator 6%: designed to give 2 to 3 shades of lift

Naturlite Cream Activator 9%: designed to give 3 to 5 shades of lift

Recommended Colors

Red, orange, yellow



Removal

Rinse thoroughly with warm water until the water runs clear. Apply Organic Care Systems Shampoo, lather and rinse, towel blot and spray Organic Care Systems Soothe Plus Treatment onto the scalp.

Then apply Organic Care Systems Conditioner, ensuring that you leave on for 5 minutes. This will close the cuticle and return the hair and scalp to pH5.

Step-by-Step Guide: Wet Stretch Test



1. Separate about 10 strands of hair and spray with water.



2. Hold hair firmly between both hands.



3. Gently pull hair away from the client's head.



4. Healthy hair should stretch around 30% of its length and then return, like an elastic band, showing no signs of damage.



Hair which stretches and returns is healthy.
Use Status Quo Shampoo on this hair type.



Hair which stretches but doesn't return to its previous length is weak in protein.
Use Power Build Shampoo and Reconstructor on this hair type.



Hair which stretches and breaks is low in protein and moisture.
Use Power Build Shampoo and Revamp Treatment on this hair type.



Hair which doesn't stretch is low in moisture.
Use Aqua Boost Shampoo and Reconstructor on this hair type.

Step-by-Step Guide: Backwash



1. Rinse client's hair



2. Apply the correct Organic Care Systems shampoo twice. The second shampoo should be left on the hair for 2 minutes before rinsing.



3. Rinse hair thoroughly.



4. Apply the correct Organic Care Systems treatment. Comb the treatment through the hair.



5. Cover hair with a plastic cap and place client under heat for 15 minutes. N.B. Heat is not required with Revamp. Hair treated with Revamp should be left uncovered for 15 minutes.



6. Rinse hair thoroughly.



7. Apply the correct Organic Care Systems conditioner and leave on the hair for 5 minutes before rinsing.



8. Rinse hair thoroughly.

Step-by-Step Guide: Coloring



1. Consultation with client about Color and style.



2. Wet stretch test to analyse hair (see Wet Stretch Test Step-by-Step).



3. Use correct Organic Care Systems shampoo and treatment for the client at the backwash.



4. Mix Color accurately.



5. Apply Color on to either wet or towel-dried hair.



6. Cover hair with plastic cap and put client under moderate heat for 10 minutes. Then allow hair to develop for a further 25 minutes without heat.



7. Emulsify the Color and then rinse until water runs clear.



8. Shampoo and condition the hair with the correct Organic Care Systems products for the client. The conditioner should be left on for 5 minutes before rinsing.



9. Show client the improved condition of her hair by doing another wet stretch test.



10. Apply styling products.



11. Style hair.



12. Happy client with healthy, natural looking hair.

Step-by-Step Guide: Foiling



1. Consultation with client about Color and style.



2. Wet stretch test to analyse hair (see Wet Stretch Test Step-by-Step).



3. Use correct Organic Care Systems shampoo and treatment for the client at the backwash.



4. Mix Color accurately.



5. Section the hair and apply Color to the sections to be foiled.



6. Apply all-over Color between the foils.



7. Cover hair with plastic cap and put client under moderate heat for 10 minutes. Then allow hair to develop for a further 25 minutes without heat.



8. Remove the all-over Color first and rinse thoroughly. Then remove the foils and rinse until the water runs clear. This is especially important when using both intensifiers and blonde highlights.



9. Shampoo and condition the hair with the correct Organic Care Systems products for the client. The conditioner should be left on for 5 minutes before rinsing.



10. Apply styling products and style hair.



11. Happy client with healthy, natural looking hair.

Our Top 10 Tips to be 'Green'

At Herb UK we feel very strongly about the environment and are continually looking to reduce our impact upon it.

We don't expect everyone to give up their cars or holidays abroad, but there are a number of small ways that we can all help to minimise waste and cost, which benefit both our planet and our wallets! Here are our top 10 tips:

1. We recommend to all our salons that they should wash out the Color, activator and care bottles for recycling. With Organic Color Systems there is no ammonia being flushed back into the water supply, which is another benefit.
2. Use full loads when washing towels and set to wash overnight for cheaper electricity rates. If you need to replace your washing machine, look for one with an A or AA rating, which means that it is energy-efficient.
3. Try to minimise water use. Don't leave taps running unnecessarily and fix any dripping taps. Plus fit water-saving aerators and cistern water-saving devices.
4. Check and maintain electrical equipment to make sure everything is working correctly and efficiently.
5. Use eco-friendly stationery. There is a vast choice of recycled paper on the market today, plus the performance of vegetable-based inks has improved significantly over the past few years.
6. Investigate alternative options from the electricity and gas suppliers. Several now offer 'eco' tariffs.
7. Remove plastic cups from your water cooler and replace them with glasses, which are much nicer to drink from as well!
8. Investigate whether your water cooler can be plumbed into your water supply in the kitchen, to avoid the need for refill bottles of water. This saves on the plastic and the petrol used to deliver them to your salon.
9. Switch off all appliances when not in use and don't leave TVs and monitors on stand-by overnight.

10. Encourage your staff to car share, use public transport or walk / cycle to work or incentivise your customers to travel by public transport to your salon.

Check out the Carbon Trust's website to calculate and manage your salon's carbon footprint - www.carbontrust.co.uk

